

During disasters, you may find it difficult to place calls. Ensure that you know several different ways of contacting family and friends so that if you cannot use one method, you can use a different method without panicking.

Methods of contacting family members

● Contact methods during a disaster	● Evacuation shelter to meet family during an emergency	● Place to leave a message about your whereabouts
① _____	① _____	_____
② _____	_____	_____
③ _____	② _____	_____

Contact details of family and friends

Name	Name	Name
Phone number	Phone number	Phone number
Mobile phone	Mobile phone	Mobile phone
Email	Email	Email

Notes

Blood type, contact details for workplace/school, household medicine, etc.

Emergency contacts

- ☎119 Fire/ambulance
- ☎110 Police
- City Office ☎048-964-2111 (Direct line)



The Koshigaya City Comprehensive Disaster Preparedness Guidebook can also be downloaded from the city's official website.



Crisis Management Office
 River Control Section, Construction Department
 4-2-1 Koshigaya, Koshigaya City, Saitama Prefecture, Post Code 343-8501



Koshigaya City

Issued
 March 2022



Comprehensive Disaster Preparedness Guidebook

English edition



A Special Citizen of Koshigaya City
 GAAYA

The Koshigaya City Comprehensive Disaster Preparedness Guidebook gathers information about preparedness for and risks from disasters to Koshigaya City. No one knows where and when a natural disaster will occur. It is critical to be aware of the importance of protecting your own life, to prepare for disasters by thinking about what you can do by yourself, as a family, or by working together with your neighbors.



Flood



Tornado



Earthquake

Contents

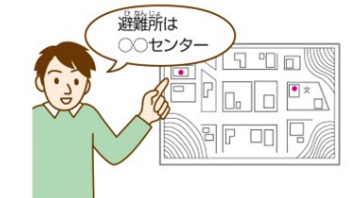
How to Use the Guidebook	P2
Storm and Flood	
What if the Tone River Overflows	P3
Flood hazard map (in the case that the Tone River overflows)	P4
Five stage alert level	P5
Tips on evacuation action	P6
Earthquake	
Seismic Vulnerability Map	P7
Seismic Intensity	P8
Earthquake! What should you do?	P8
Tornado and Thunder	
Protecting yourself from a tornado and lightning	P9
Disaster Preparedness	
Preparations for around and inside your home	P10
Items to always have ready	P11
Gathering information	P12
Evacuation area/shelters map	
Evacuation area/shelters map ① (North)	P13~14
Evacuation area/shelters map ② (Southwest)	P15~16
Evacuation area/shelters map ③ (Southeast)	P17~18

● This hazard map was created based on the map of areas predicted to flood and the FY2012/2013 Earthquake Damage Estimation Survey of Saitama Prefecture published by the Ministry of Land, Infrastructure, Transport and Tourism Kanto Regional Development Bureau and Saitama Prefecture.

How to Use the Guidebook

● Before a disaster (during normal times)

- Decide an evacuation area with your family according to the envisaged disaster (earthquake, flood, or large fire).
- Take disaster preparedness measures such as preparing an emergency bag and securing your furniture so it does not fall over.
- Determine a route to the evacuation area.
- Confirm a place to meet your family and a method to contact them.
- Decide an evacuation area that you can go to from your workplace or school.
- Confirm ways to gather information and check well-being.
- Write down what you have decided as a family ("Methods of contacting family members" on the last page).



● When a disaster has occurred or may occur (during an emergency)

- When there is heavy rainfall or an earthquake has occurred, check "Methods of contacting family members" on the back of the front page and refer to "Gathering Information" on pages 12 for information about disasters and evacuation area.



Take the smartphone app, Avenza Maps, with you!



Avenza Maps is an offline map application that can be used on a smartphone or tablet. There are over 1.5 million maps from around the world registered in the map store and many of them can be downloaded for free. The downloaded maps can tell you your location by using the GPS built into your smartphone even if your device cannot connect to the Internet.



You can download the map on page 4,7,13-18 using a 2D code.

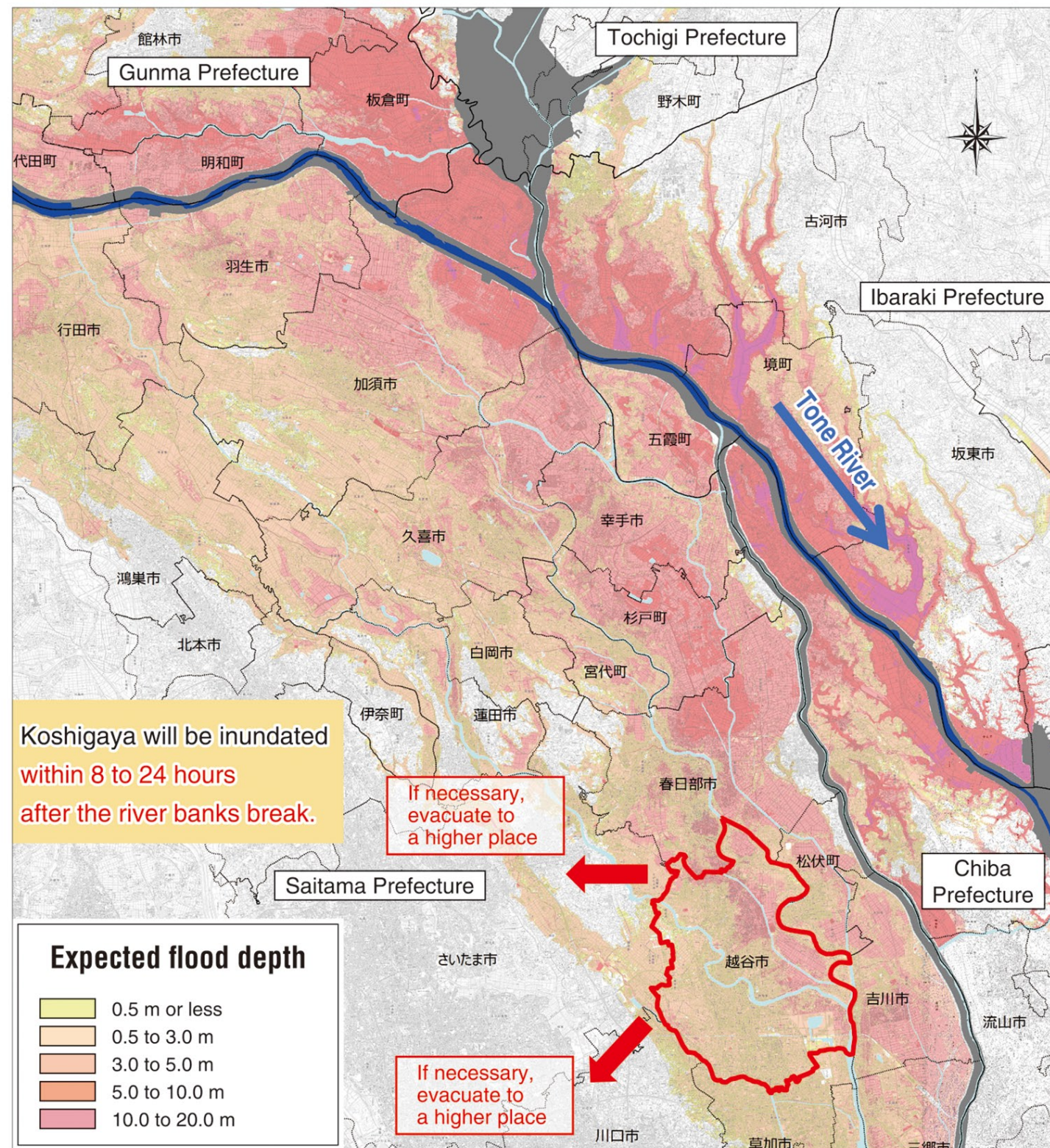
What if the Tone River Overflows

Flood hazard map (in the case that the Tone River overflows)

This Flood Hazard Map

This map predicts the inundation situation using a simulation in the case that the Tone River overflows due to flooding caused by the maximum amount of predictable rainfall (a once-in-a-thousand-years event: total rainfall of 491 mm over a 72-hour period). For the city of Koshigaya, should the Tone River overflow, damage and destruction is predicted. This is because the flood plane is larger and the river is deeper than the other areas.

Please check on the map where you live and the height of water in the case that the river overflows.

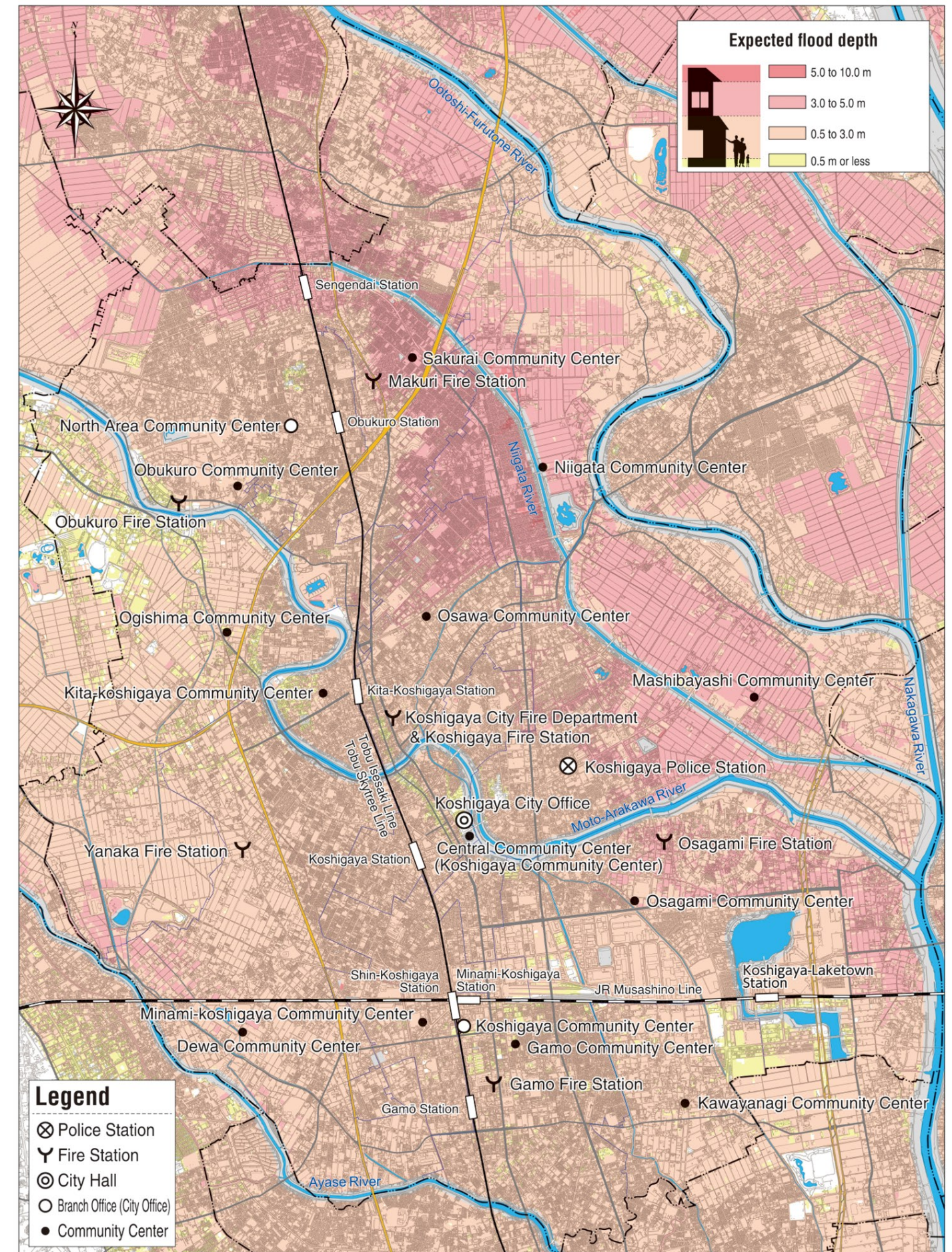


Koshigaya will be inundated within 8 to 24 hours after the river banks break.

If necessary, evacuate to a higher place

If necessary, evacuate to a higher place



浸水想定区域は、国土交通省関東地方整備局が作成した想定最大規模降雨による「利根川水系利根川洪水浸水想定区域図(想定最大規模)」(指定年月日：平成29年7月20日)を使用したものです。



この地図は、国土地理院長の承認を得て、同院発行の基礎地図情報を使用したものです。(測量法に基づく国土地理院長承認(使用)R3 JHs8) 浸水想定区域は、国土交通省関東地方整備局が作成した想定最大規模降雨による「利根川水系利根川洪水浸水想定区域図」(指定年月日：平成29年7月20日)を使用したものです。

Five stage alert level

Weather and evacuation information will be announced as per the table below in accordance with the situation.

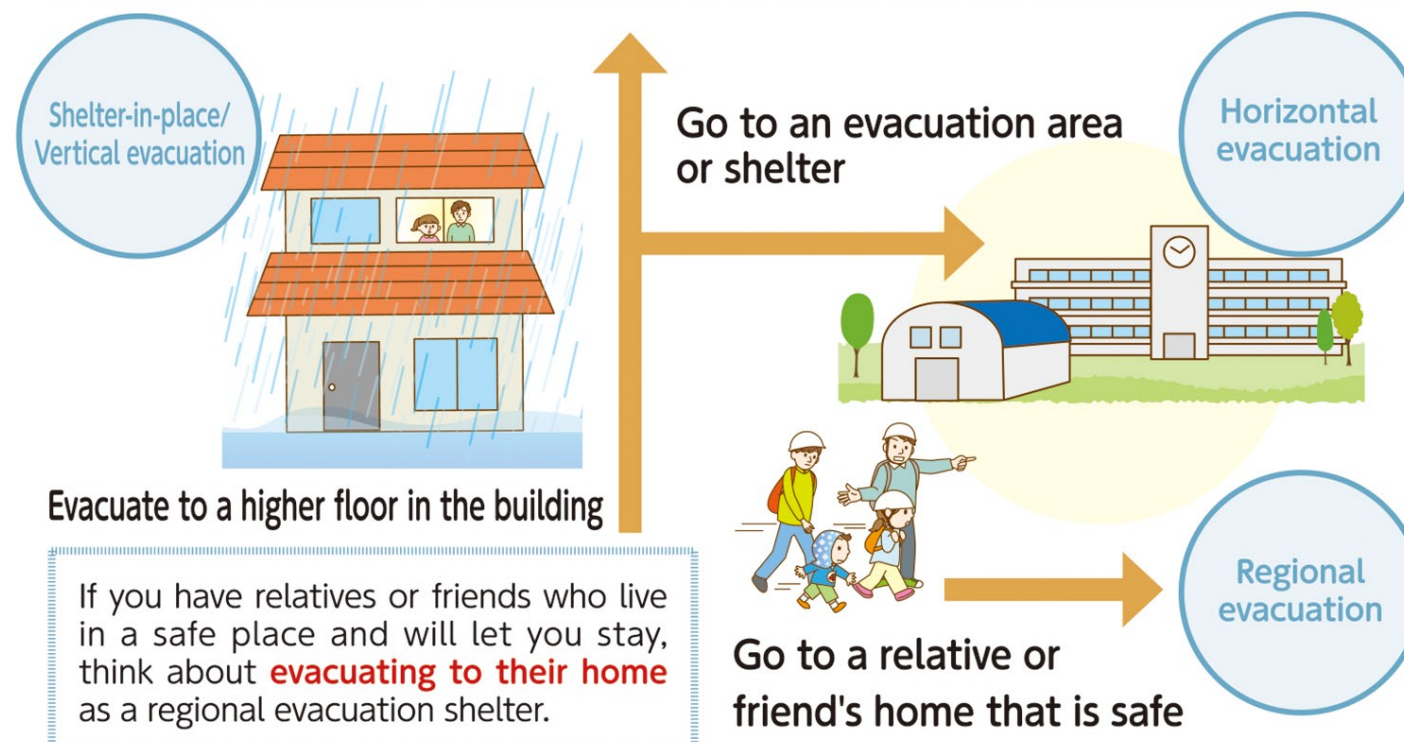
Alert level	Action to take	Weather and evacuation information
5	A situation in which a disaster has already occurred . Take the best action to protect yourself . 	Emergency safety measures (issued by Koshigaya City)
<Everyone should evacuate at warning level 4!>		
4	Quickly evacuate a dangerous place and go to an evacuation area . Evacuate to the nearest safe place or to a safer place in your home. 	Evacuation order (issued by Koshigaya City)
3	People who need time to evacuate should evacuate now . Other people should prepare to evacuate. 	Evacuation of the elderly, etc. (issued by Koshigaya City)
2	Prepare to move to the second floor or higher in your house or check your evacuation action using the hazard map or other resources . 	Heavy rain advisory Flood advisory (issued by the Japan Meteorological Agency)
1	Check the latest weather information and increase your preparedness for a disaster . 	Early warning information (issued by the Japan Meteorological Agency)

※Note that information may not always be issued in this order.
※Start evacuating if you feel danger even if information is not issued.






Tips on evacuation action

Gather information on disaster preparedness and weather, and take the appropriate evacuation action according to the situation.

Sheltering in place at your home or evacuating to **higher floors in a strong building** nearby (vertical evacuation) is also an effective evacuation action.



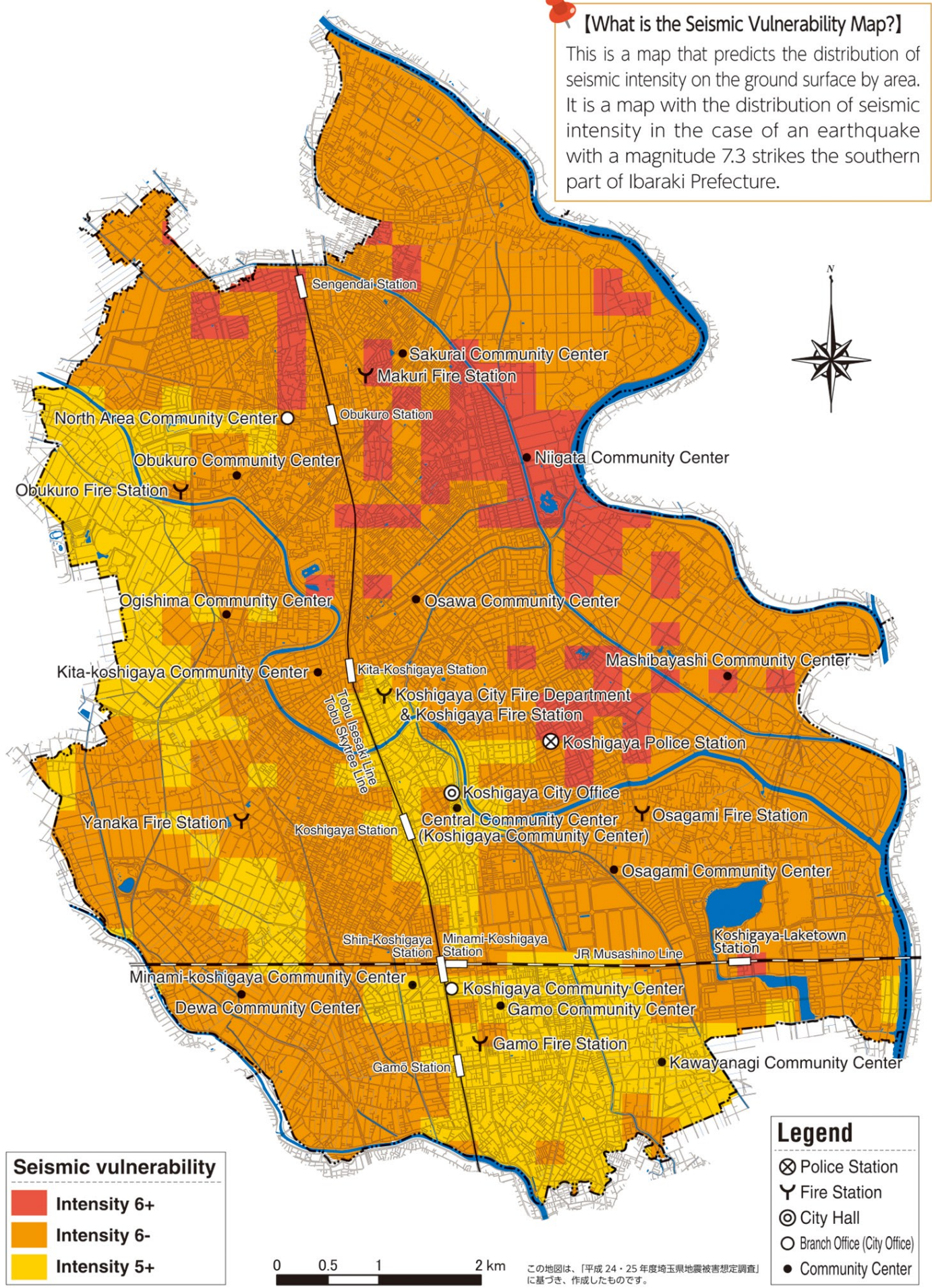
Time to evacuate! What should you do in that case?

- Gather accurate information**
Use a TV, radio, smartphone, and/or other devices to gather the latest information on warnings, weather, and evacuation. 
- Refrain from evacuating by car**
As a car may get stuck on a flooded road or prevent emergency vehicles from getting through, refrain from evacuating by car if possible. 
- Evacuate in clothes that enable freedom of movement**
Put on comfortable clothes that allow you to move freely when evacuating. Sandals and boots are not suitable for evacuating, so wear sneakers. 
- Evacuate to a tall building nearby**
Evacuate to a strong and tall building nearby or to a higher floor and await rescue. 
- Do not go near rivers or other dangerous places**
Refrain from going to see the condition of rivers and canals as such actions are dangerous. 

Seismic Vulnerability Map

Seismic Intensity

[What is the Seismic Vulnerability Map?]
This is a map that predicts the distribution of seismic intensity on the ground surface by area. It is a map with the distribution of seismic intensity in the case of an earthquake with a magnitude 7.3 strikes the southern part of Ibaraki Prefecture.



<p>5 Most people will be frightened and will want to hold onto something. It is difficult to walk without holding onto something, hence movement is difficult.</p>	<p>Earthquake shaking</p> <p>Intensity 7</p> <p>Intensity 6+</p> <p>Intensity 6-</p> <p>Intensity 5+</p> <p>Intensity 5-</p> <p>Intensity 4</p> <p>Intensity 3</p> <p>Intensity 2</p> <p>Intensity 1</p> <p>Intensity 0</p>	<p>7 People are buffeted by the shaking, it is impossible to move, and some people may be thrown around. Most unanchored furniture moves or falls, and may be thrown around.</p>
<p>4 Most people will be surprised. Most people walking will feel the shaking. Most people will be awakened (by the shaking).</p>		<p>6 It is impossible to stand and the only way to move is by crawling. Most unanchored furniture moves and a lot of things fall.</p>
<p>2 Most people standing or sitting still in a room will feel the shaking. Some people sleeping will be awoken.</p>		

Earthquake! What should you do?

If you feel a large amount of shaking, prioritize your own safety. Next, check the situation around you, and if there is danger, head to an evacuation area.

If you are in your home



- 1 First prioritize your own safety**
If you feel shaking intense enough that you cannot stand, get under a strong desk or table. If there is a cushion or some other soft object nearby, use that to protect your head.
- 2 Take care of open flames**
Once the shaking settles down, turn off gas appliances, heaters, and devices with an open flame. Turn off the stop valve for gas appliances and remove the plug from electrical appliances.
- 3 Ensure an escape exit**
Door frames may deform and not open due to the shaking. Open doors and windows in the entrance and rooms to ensure that you can escape at any time.
- 4 Stay calm and take action**
Obtain the correct information from TV and radio, and check disaster information issued by the Koshigaya City government. If your home is in danger, go to an evacuation area.



If you are on the street

Move away from buildings and protect your head with your hands or bag.



If you are driving a vehicle

Gradually slow down and pull over to the left side of the road. Do not forget to leave your keys in the car. Do not forget to take your valuables with you.



Protecting yourself from a tornado and lightning

Prepare for a disaster

A tornado and lightning may occur in these cases.

Clouds spread horizontally (sideways) several kilometers to tens of kilometers

The height reaches several tens of kilometers

Thunder cloud

Lightning

Sudden rain

Hail

Tornado

Evacuate immediately to a safe place!

- Dark clouds approaching and the surrounding area becomes dark suddenly.
- You hear thunder and/or see lightning.
- A cold wind blows.
- Large rain droplets or hail falls.

● Protecting yourself from a tornado

Tornadoes occur suddenly. Learn about the characteristics of tornadoes and take quick action to protect yourself.

If you are indoors



- Move to a room that does not have windows on the first floor.
- Close shutters and curtains, and move away from windows.
- Get under a desk or table and make yourself as small as possible protecting your head.

If you are outdoors



- Hurry into a strong building. If there are no buildings nearby, get into the shadows of the strongest structure as possible and be in a crawling position.
- Do not go into a shed or prefabricated structure.
- Do not go near thick trees or power poles.

Indoor provisions and places to inspect

Install a seismometric circuit breaker that automatically turns off the electricity when it detects seismic activity.

Secure the drawers and other tall furniture with L brackets or a tension pole.

Install a door lock on hinged doors to prevent them from opening

Secure lights with a wire or chain to prevent them from falling.

Paste anti-shatter film on windows and other plate glass covering the entire surface

Install curtains that are fire-resistant

To prevent injury from glass fragments, prepare easily accessible slippers

Purchase heaters that automatically turn off when they detect an earthquake.

Do not place flammable objects nearby when in use

Outdoor provisions and places to inspect

Check that roof tiles and corrugated iron roofing is not damaged or rusted.

Check that joints are not loose or rusted. Clean up so that fallen leaves and sand do not clog gutters.

Check that there is no risk of flowerpots and laundry poles on the veranda dropping or falling over.

Firmly secure antennas and objects around the house so they do not fall over.

Put objects away so that they do not blow away and break windows.

Items to always have ready

Sheltering at your home that you are familiar with is better than living at an evacuation shelter with people you do not know. It is important to prepare in advance so that you can shelter at your home.

At least three days worth and if possible seven days worth



Prepare at least three days worth of food and water, and if possible seven days worth. Generally speaking, one person requires three liters of water per day.

● Things to keep in your home

<p>Emergency food (food that can be kept for a long period of time)</p>	<p>Water</p>	<p>An emergency toilet (when water is not available)</p>
<p>Sanitary goods (tissues, toilet paper, etc.)</p>	<p>Lighting appliances (flashlights, headlamps, etc.)</p>	<p>Stove</p>

● Things to take with you when evacuating

If your home is damaged, you will have to live at an evacuation shelter. Aid will take time to arrive. Prepare an emergency kit with the supplies (including medicine) that you need to take with you when evacuating.

<p>Cash</p>	<p>Passport/ID</p>	<p>Masks, sanitizer</p>	<p>Medicine, medicine notebook</p>	<p>Portable radio</p>	<p>Emergency food and water (500 ml)</p>
<p>Towel, raincoat</p>	<p>Wet wipes</p>	<p>Toothbrush</p>	<p>Mobile battery</p>	<p>Portable toilet</p>	<p>Underwear, change of clothes</p>

Gathering information

If a disaster occurs or there is the risk one may occur, the Koshigaya City government will issue information about evacuation. Evacuation and disaster information can be checked on TV, radio, and the city website, so check how to gather information regularly so that you can check information immediately in the event of a disaster.



Smartphone app "Bosai Koshigaya"

- Information that you can check on the disaster preparedness app
- Reception of the emergency broadcast system (a function that receives and reads text aloud)
 - Obtain disaster preparedness information (receive weather warnings, advisories, earthquake bulletins, earthquake intensity information, and L-alerts)
 - Search for evacuation shelters (display of route information using GPS and augmented reality)
 - Browse the hazard map (flooding, earthquakes)
 - Register your safety
 - Website link (Koshigaya City government website, Twitter account, disaster information management system, etc.)
 - Today's weather

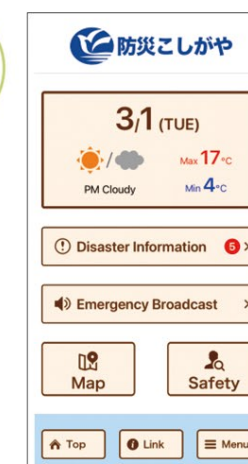
Download from here



iOS



Android



Emergency broadcast system

There are 140 outdoor speakers for the emergency broadcast system installed throughout the city, and evacuation information and other important information is broadcast by the Koshigaya City government during a disaster. Additionally, the content broadcast from the emergency broadcast system can be checked on various media sources.



Interactive voice response system 048-962-5333

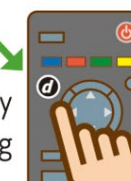
※ Phone charges apply.

You can check the content broadcast by the emergency broadcast system with a phone.



TV ● NHK General Channel 1

TVs that support data broadcasts can display weather and disaster information by pressing the **d** button on the remote control.



- Information that can be checked by pressing the **d** button
- Warnings and advisory announcement status
 - Typhoon information
 - River water levels
 - Rainfall amount
 - Evacuation information status
 - Open evacuation shelters
 - Notifications from the Koshigaya City government



NHK WORLD-JAPAN

NHK WORLD-JAPAN is the NHK international service. The service disseminates information in multiple languages via TV, radio, and the internet.

▶ <https://www3.nhk.or.jp/nhkworld/en/>



Links for Multilingual News & BOSAI Info
▶ https://www3.nhk.or.jp/nhkworld/en/multilingual_links/en.html



Information will also be posted on the website.



Koshigaya City Website



Koshigaya City e-mail address



Koshigaya City Twitter account



Koshigaya City LINE account



※ Be careful of fake and incorrect information when collecting information.

Evacuation area / shelters map ① (North)

What is a designated evacuation shelter?

This is a facility where you can stay temporarily if your home is damaged due to a disaster.

What is a designated emergency evacuation area?

This is a place that you can go to escape danger when a disaster occurs or may occur.

What is a regional evacuation area?

This is a place at which you can protect yourself from radiant heat and smoke from widespread fires caused by a large earthquake.

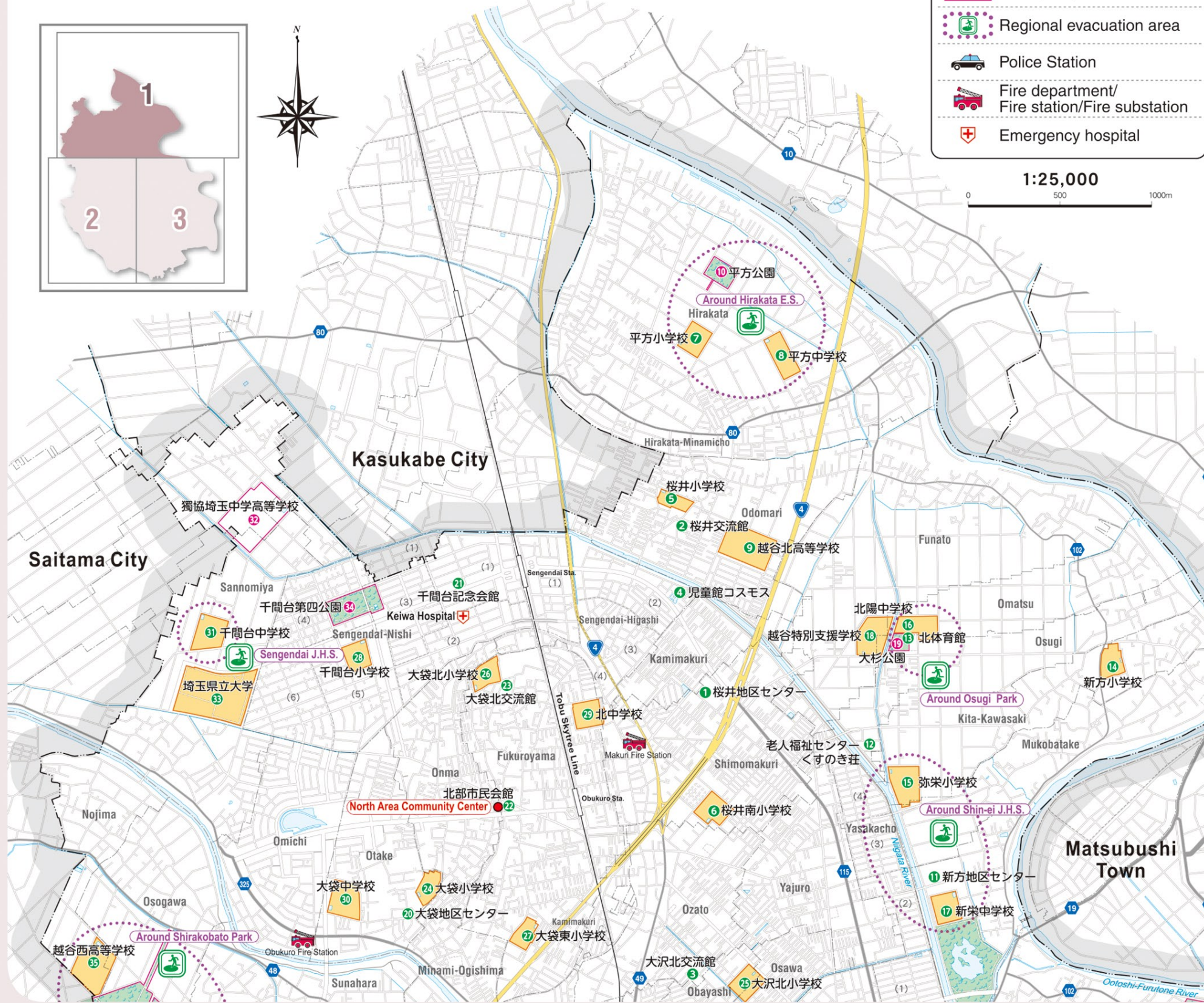
※As these evacuation areas and shelters are opened according to the state of damage caused by a disaster, not all evacuation sites are opened at the same time. Check information disseminated by the Koshigaya City government about the open status.

Legend

- City Office / Branch Office
- Emergency evacuation area / Evacuation shelter
- Emergency evacuation area
- Regional evacuation area
- Police Station
- Fire department / Fire station / Fire substation
- Emergency hospital

1:25,000

0 500 1000m

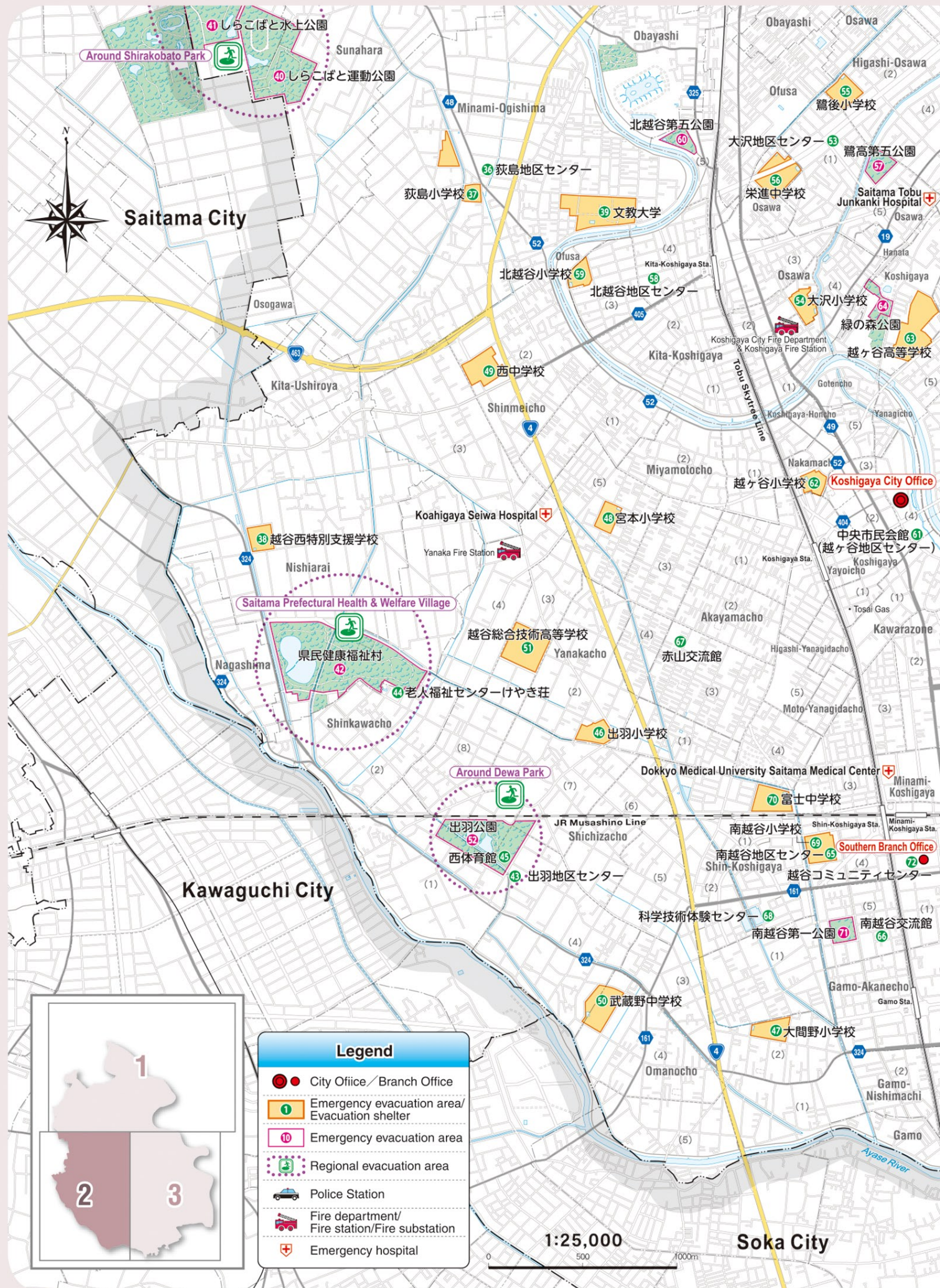


Designated emergency evacuation area / Designated evacuation area

No	Name	Address	Designated emergency evacuation area			Designated evacuation area
			Earthquake	Flood	Fire	
1	桜井地区センター	Sakurai Community Center	○	○	○	○
2	桜井交流館	Sakurai Cultural Center		○		○
3	大沢北交流館	Osawa-kita Cultural Center	○	○	○	○
4	児童館コスモス	"Cosmos" Scientific Museum for Children	○	○	○	○
5	桜井小学校	Sakurai E.S.	○	○	○	○
6	桜井南小学校	Sakurai-minami E.S.	○	○	○	○
7	平方小学校	Hirakata E.S.	○	○	○	○
8	平方中学校	Hirakata J.H.S.	○	○	○	○
9	越谷北高等学校	Koshigaya-kita H.S.	○	○	○	○
10	平方公園	Hirakata Park	○			
11	新方地区センター	Niigata Community Center	○	○	○	○
12	老人福祉センターくすのき荘	"Kusunoki-so" Senior Citizen's Center	○	○	○	○
13	北体育館	Kita Gymnasium		○		○
14	新方小学校	Niigata E.S.	○	○	○	○
15	弥栄小学校	Yasaka E.S.	○	○	○	○
16	北陽中学校	Hokuyo J.H.S.	○	○	○	○
17	新栄中学校	Shin-ei J.H.S.	○	○	○	○
18	越谷特別支援学校	Koshigaya Special Needs School	○	○	○	○
19	大杉公園	Osugi Park	○			
20	大袋地区センター	Obukuro Community Center		○		○
21	千間台記念会館	Sengendai Commemorative Hall		○		○
22	北部市民会館	North Area Community Center	○	○	○	○
23	大袋北交流館	Obukuro-kita Cultural Center	○	○	○	○
24	大袋小学校	Obukuro E.S.	○	○	○	○
25	大沢北小学校	Osawa-kita E.S.	○	○	○	○
26	大袋北小学校	Obukuro-kita E.S.	○	○	○	○
27	大袋東小学校	Obukuro-higashi E.S.	○	○	○	○
28	千間台小学校	Sengendai E.S.	○	○	○	○
29	北中学校	Kita J.H.S.	○	○	○	○
30	大袋中学校	Obukuro J.H.S.	○	○	○	○
31	千間台中学校	Sengendai J.H.S.	○	○	○	○
32	獨協埼玉中学高等学校	Dokkyo Saitama Junior & Senior H.S.	○			○
33	埼玉県立大学	Saitama Prefectural University	○	○	○	○
34	千間台第四公園	Sengendai Daiyon Park	○			
35	越谷西高等学校	Koshigaya-nishi H.S.	○	○	○	○

「この地図の作成に当たっては、国土地理院長の承認を得て、同院発行の数値地図(国土基本情報)電子国土基本図(地図情報)、数値地図(国土基本情報)電子国土基本図(地名情報)及び数値地図(国土基本情報)基礎地図情報(数値標高モデル)を使用した。(承認番号 平29情保、第413号)」

Evacuation area / shelters map ② (Southwest)



Designated emergency evacuation area / Designated evacuation area

No	Name	Address	Designated emergency evacuation area			Designated evacuation area
			Earthquake	Flood	Fire	
36	荻島地区センター	Ogishima Community Center	○	○	○	○
37	荻島小学校	Ogishima E.S.	○	○	○	○
38	越谷西特別支援学校	Koshigaya-nishi Special Needs School	○	○	○	○
39	文教大学	Bunkyo University	○	○	○	○
40	しらこぼと運動公園	Shirakobato Athletic Park	○		○	
41	しらこぼと水上公園	Shirakobato Aquatic Park	○		○	
42	県民健康福祉村	Saitama Prefectural Health & Welfare Village	○		○	
43	出羽地区センター	Dewa Community Center	○	○	○	○
44	老人福祉センターけやき荘	"Keyaki-so" Senior Citizen's Center	○	○	○	○
45	西体育館	Nishi Gymnasium	○	○	○	○
46	出羽小学校	Dewa E.S.	○	○	○	○
47	大間野小学校	Omano E.S.	○	○	○	○
48	宮本小学校	Miyamoto E.S.	○	○	○	○
49	西中学校	Nishi J.H.S.	○	○	○	○
50	武蔵野中学校	Musashino J.H.S.	○	○	○	○
51	越谷総合技術高等学校	Koshigaya Sogo-gijutsu H.S.	○	○	○	○
52	出羽公園	Dewa Park	○		○	
53	大沢地区センター	Osawa Community Center	○	○	○	○
54	大沢小学校	Osawa E.S.	○	○	○	○
55	鷺後小学校	Sagishiro E.S.	○	○	○	○
56	栄進中学校	Eishin J.H.S.	○	○	○	○
57	鷺高第五公園	Sagitaka Daigo Park	○		○	
58	北越谷地区センター	Kita-koshigaya Community Center	○	○	○	○
59	北越谷小学校	Kita-koshigaya E.S.	○	○	○	○
60	北越谷第五公園	Kita-Koshigaya Daigo Park	○		○	
61	中央市民会館	Central Community Center	○	○	○	○
62	越ヶ谷小学校	Koshigaya E.S.	○	○	○	○
63	越ヶ谷高等学校	Koshigaya H.S.	○	○	○	○
64	緑の森公園	Midori-no-mori Park	○		○	
65	南越谷地区センター	Minami-koshigaya Community Center	○	○	○	○
66	南越谷交流館	Minami-koshigaya Cultural Center		○		○
67	赤山交流館	Akayama Cultural Center	○	○	○	○
68	科学技術体験センター	Koshigaya Science & Technology Museum	○	○	○	○
69	南越谷小学校	Minami-koshigaya E.S.	○	○	○	○
70	富士中学校	Fuji J.H.S.	○	○	○	○
71	南越谷第一公園	Minami-Koshigaya Daiichi Park	○		○	
72	越谷コミュニティセンター	Koshigaya Community Center	○	○	○	○

Evacuation area / shelters map ③ (Southeast)



Designated emergency evacuation area / Designated evacuation area

No	Name	Address	Designated emergency evacuation area			Designated evacuation area
			Earthquake	Flood	Fire	
73	増林地区センター	Mashibayashi Community Center	○	○	○	○
74	老人福祉センターゆりのき荘	"Yurinoki-so" Senior Citizen's Center	○	○	○	○
75	総合体育館	General Gymnasium	○	○	○	○
76	東小林記念会館	Higashi-kobayashi Memorial Hall		○		○
77	増林小学校	Mashibayashi E.S.	○	○	○	○
78	東越谷小学校	Higashi-koshigaya E.S.	○	○	○	○
79	花田小学校	Hanata E.S.	○	○	○	○
80	城ノ上小学校	Shironoue E.S.	○	○	○	○
81	東中学校	Higashi J.H.S.	○	○	○	○
82	越谷東高等学校	Koshigaya-higashi H.S.	○	○	○	○
83	東越谷第二公園	Higashi-Koshigaya Daini Park	○		○	
84	越谷総合公園	Koshigaya General Park	○		○	
85	増林公園	Mashibayashi Park	○		○	
86	蒲生地区センター	Gamo Community Center	○	○	○	○
87	蒲生交流館	Gamo Cultural Center		○		○
88	南部交流館	Nambu Cultural Center	○	○	○	○
89	児童館ヒマワリ	"Himawari" Scientific Museum for Children	○	○	○	○
90	蒲生小学校	Gamo E.S.	○	○	○	○
91	蒲生南小学校	Gamo-minami E.S.	○	○	○	○
92	南部第四公園	Nambu Daiyon Park	○		○	
93	川柳地区センター	Kawayanagi Community Center		○		○
94	老人福祉センターひのき荘	"Hinoki-so" Senior Citizen's Center	○	○	○	○
95	南体育館	Minami Gymnasium	○	○	○	○
96	川柳小学校	Kawayanagi E.S.	○	○	○	○
97	明正小学校	Meisei E.S.	○	○	○	○
98	南中学校	Minami J.H.S.	○	○	○	○
99	光陽中学校	Koyo J.H.S.	○	○	○	○
100	越谷南高等学校	Koshigaya-minami H.S.	○	○	○	○
101	叡明高等学校	Eimei H.S.	○		○	
102	川柳公園	Kawayanagi Park	○		○	
103	大相模地区センター	Osagami Community Center	○	○	○	○
104	大相模小学校	Osagami E.S.	○	○	○	○
105	西方小学校	Nishikata E.S.	○	○	○	○
106	大相模中学校	Osagami J.H.S.	○	○	○	○
107	レイクタウンスポーツ公園	Laketown Sports Park	○		○	
108	見田方遺跡公園	Mitakata-Iseki Park	○		○	
109	越谷流通公園	Koshigaya Ryutsu Park	○		○	
110	中央中学校	Chuo J.H.S.	○	○	○	○